

# OPERATOR'S MANUAL

INCLUDE MANUALS: PD05P-X 1/2" Diaphragm Pump (pn 97999-781)

# 670040-X

# 670041-X

## 670040-X & 670041-X SPECIAL 1/2" DIAPHRAGM PUMPS

RELEASED: 2-24-05  
REVISED: 3-9-05  
(REV. 02)

### GENERAL DESCRIPTION

- The 670040-X special 1/2" diaphragm pumps are similar to PD05P-AAS-XXX diaphragm pumps.
- The 670041-X special 1/2" diaphragm pumps are similar to PD05P-ASS-XXX diaphragm pumps.

A PD05P-X Operator's Manual (pn 97999-781) is to be used for General Information, Installation, Operation and Maintenance.

The special models and their standard model counterparts are shown in the chart at right. Refer to the standard PD05P-X Operator's Manual for service kits and other information. Follow the standard parts list with the exception of the items listed below.

NOTE: All models use a modified pilot rod to shorten the pump stroke and further reduce pulse. For part differences, refer to the view below.

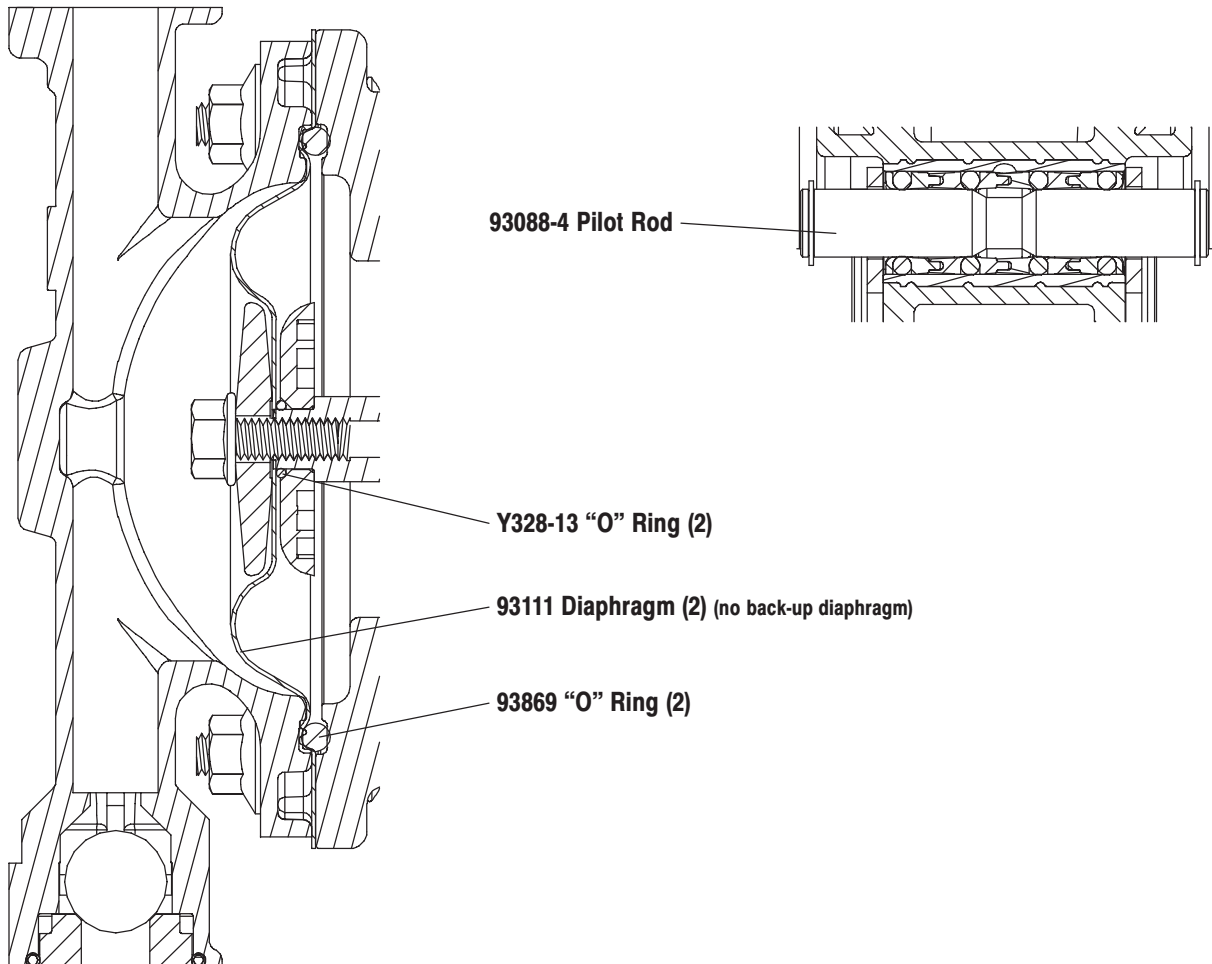
### MODEL CHART

SPECIAL MODEL	STANDARD MODEL
670040-SST	PD05P-AAS-SST
670041-SST	PD05P-ASS-SST

### SERVICE KITS

637140-ST for fluid section repair.

637141 for air section repair.



PN 97999-1150

INGERSOLL-RAND COMPANY  
P.O. BOX 151 • ONE ARO CENTER • BRYAN, OHIO 43506-0151  
☎ (800) 276-4658 • FAX (800) 266-7016

©2005

CCN 15240476

**ARO®**  
**Ingersoll-Rand®**